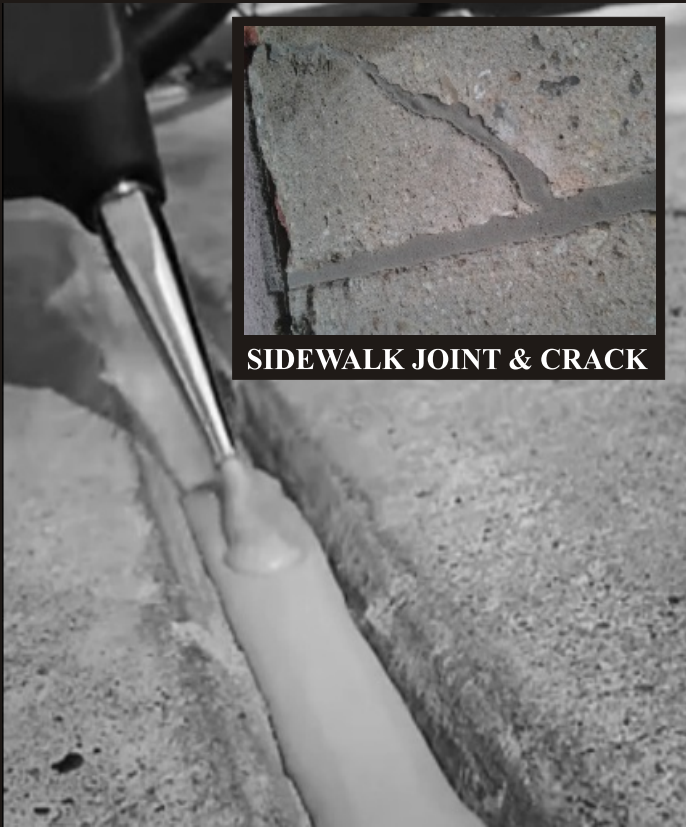


HOT MELT RUBBER

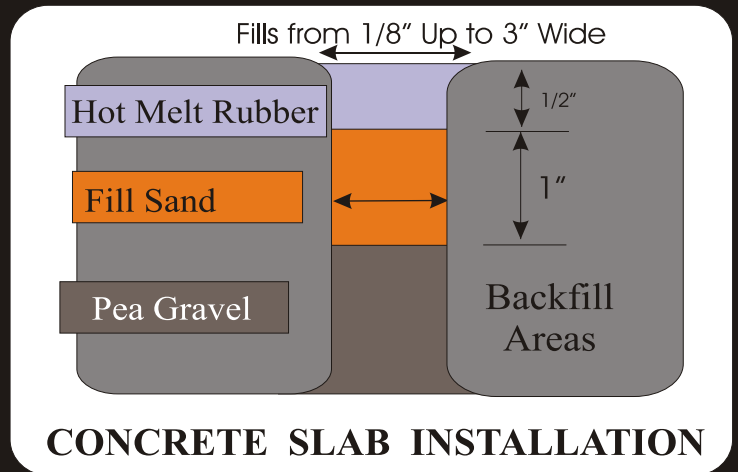
Hot Applied Joint & Crack Filler

HMR PRODUCT FEATURES:

- * SOLID RUBBER MELTS WHEN HEATED
- * APPLIED HOT, TRAFFIC READY IN MINUTES
- * WORKS ON CONCRETE OR ASPHALT
- * LONG LASTING / IMMEDIATE USE SOLUTION
- * WITHSTANDS HI OR LOW SLAB TEMPERATURE
- * REPAIRS EASILY - CAN BE RE-HEATED
- * LIGHT GRAY COLOR FOR CONCRETE USE
- * BLACK COLOR FOR ASPHALT
- * OTHER COLORS AVAILABLE ON REQUEST
- * MEETS APPLICABLE ASTM, AASHTO, FEDERAL & STATE REQUIREMENTS
- * FOR RESIDENTIAL & COMMERCIAL USE



SIDEWALK JOINT & CRACK



RUBBER MELTS WHEN HEATED



VARIETY OF SIZES AVAILABLE



CUSTOM COLORS AVAILABLE



FAST / EASY REPAIRS

HOT MELT RUBBER, INC.

P.O. BOX 1177

CEDAR PARK, TX 78613

EMAIL: INFO@HOTMELTRUBBER.COM

Hot Melt Rubber™ is your best overall solution when it comes to expansion joint replacement.

HotMeltRubber.com